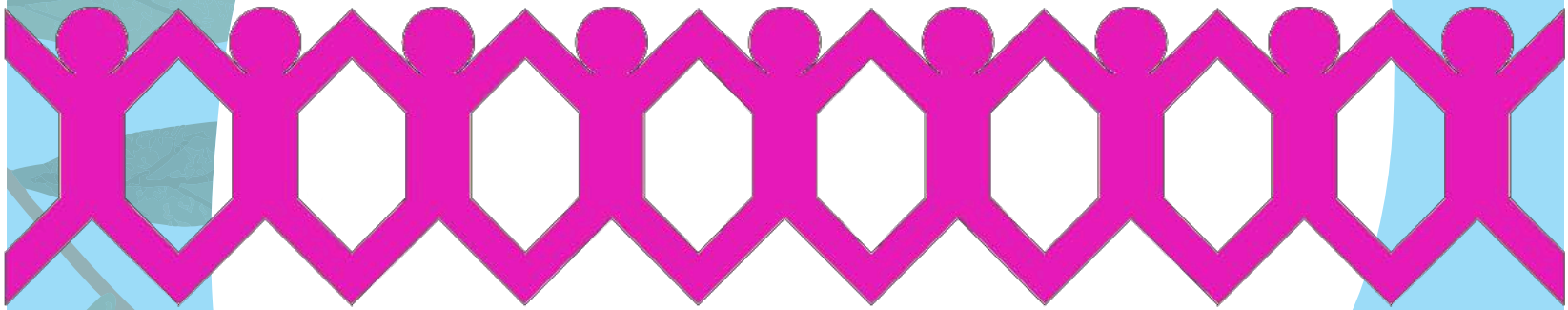


MY FAMILY

MY FAMILY IS CALLED

.....



An inherited cancer means that cancer is caused by a damaged gene that can be passed down in families.

An inherited cancer means that cancer is caused by a damaged gene

that can be passed down in families.

Genes are little bits of DNA. DNA is found in all cells that make up the body.

DNA are instructions that tell what the cells need to do.

The DNA that makes me me, comes from my mum and dad.

and the other half comes from my dad.

Can you tell which physical traits you get from your mum or your dad?

Half comes from my mum,



This gene was passed down from my grandparents, and their great grandparents and their great great grandparents

What colour are your eyes? Hair colour? Curly hair or straight hair? Big feet? Pointy nose? Long fingers?

This is caused by a damaged gene called

My

has a cancer called

It might be passed down to me.

What does that mean?

I might carry the gene but nothing will happen to me.

Having a higher risk doesn't mean I will definitely get cancer.

I might carry the gene so might be at a higher risk of getting cancer

I'd like more information about...



On my 18th birthday I can get tested if I want to see if I have the damaged gene.

If you do have the damaged gene, you will get lots of support to help you. For example, you might have doctors checking up on you more regularly than other people.

QUESTIONS I HAVE

1.
2.
3.
4.
5.
6.

REMEMBER

Remember, even if you do have the damaged gene, you might not get cancer.